



ASIMOV
STORES

Model# dolphin L2



Expandable Functions

Can be paired with other professional detection instruments (infrared thermal imagers, 3D lidar, inertial navigation mapping devices, etc.) to meet multi-scenario detection needs.

Wireless connection:

The control terminal is connected to the cable car via Wi-Fi, with an effective distance of 10m, ensuring zero video delay and no lag.

Long-lasting battery endurance:

Powered by cable cart, single-charge battery operation is 10 hours

Protection level

The crawler has an IP68 protection level, waterproof and dustproof up to 10 meters.

Obstacle Climbing Capability

The crawler has a maximum climbing angle of $\angle 37^\circ$ and the vehicle body has an anti-rollover alarm function.

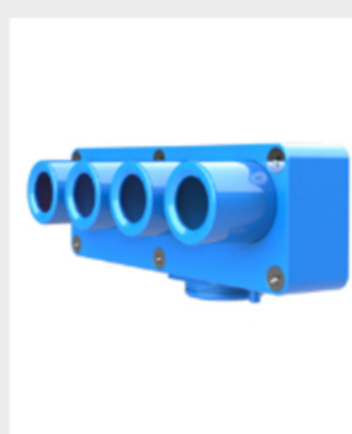
High-definition lens

2.1MP front and rear cameras, front gimbal with one-touch defog and laser distance measurement, scratch-resistant, wear-resistant, and condensation-resistant lenses

Equipped with modules



Inertial navigation and mapping module



Gas detection module



Upper high beam searchlight module



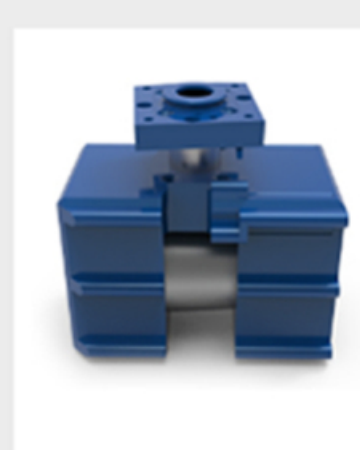
4G gateway



L3 infrared thermal imaging HD PTZ



L3 gimbal with 18x zoom



3D laser scanning radar module

Application scenarios



Municipal drainage network is one of the important infrastructures of a city. In urban life, drainage network is as indispensable as blood vessels of the human body. During the construction of drainage network, pipeline installation is an important hidden project and the core of the whole project quality. Pipeline inspection robot can well grasp the pipeline situation through endoscopic inspection of drainage network condition

Using CCTV inspection systems such as drainage pipe inspection robots and high-definition endoscopic cameras, inspections of dangerous areas such as box culverts and culverts can be realized. Peep detection.



There are a large number of unknown goafs in many resource integration mines in my country. The use of crawling robots to detect disasters such as water disasters, fires, sudden roof collapse, etc. caused by goafs can eliminate safety hazards.

When urban pipeline corridor projects such as electricity, communications, gas, water supply and drainage are completed, pipeline inspection robots can be used to inspect and then perform maintenance and repair

